



WILL COUNTY, ILLINOIS



Mills-Cherry Hill Study

We need your input!

You are an essential part of this process and helping WCDOT understand the issues and needs for the Mills-Cherry Hill Road Study. We want to hear from you about transportation and community needs in this area!



There are several ways to provide comments and ask questions. The comment period is open through November 17, 2023.



Today in-person



Will County Division of Transportation
C/O Christina Kupkowski, PE
16841 W. Laraway Road
Joliet, IL 60433



Connect@MillsCherryHillStudy.com

MillsCherryHillStudy.com

Scan the QR code to provide additional feedback on the Mills-Cherry Hill Road Study.



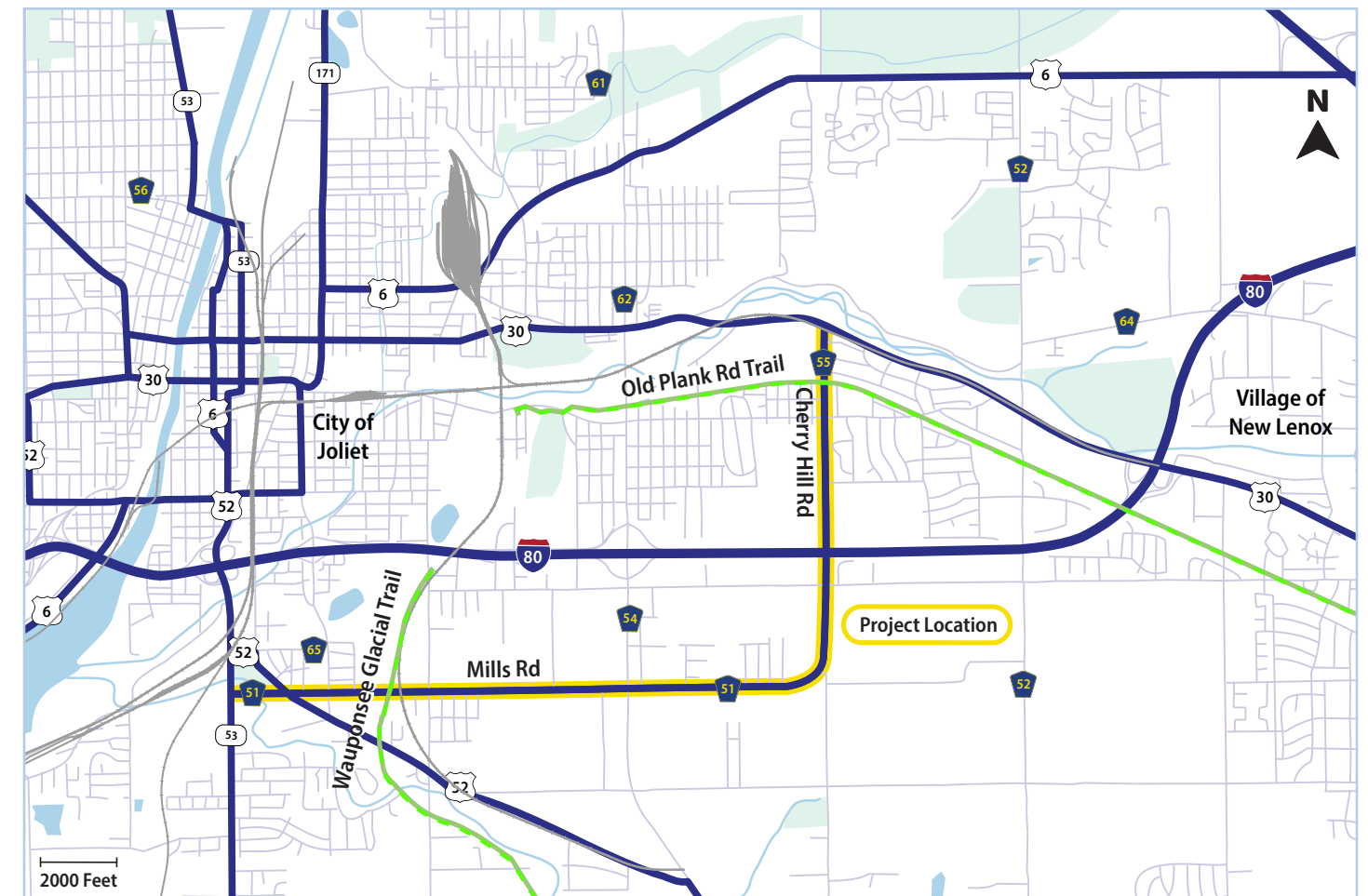
WILL COUNTY, ILLINOIS



Mills-Cherry Hill Study

Mills-Cherry Hill Road Study

October 18, 2023



Mills-Cherry Hill Road Study

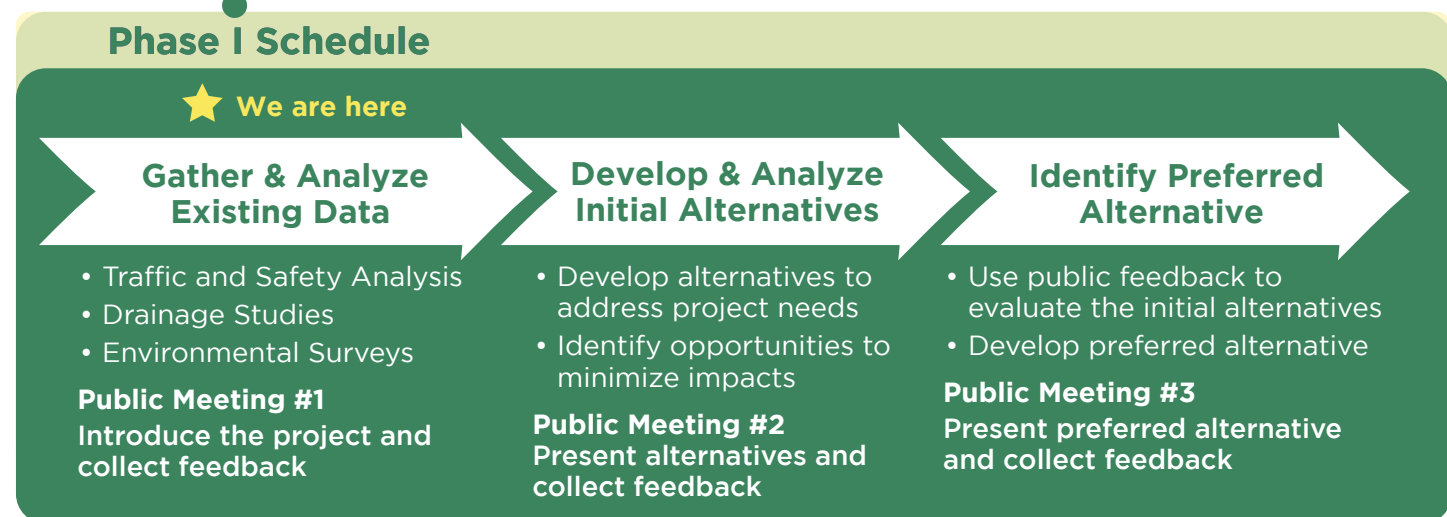
The Mills Road and Cherry Hills Road area is a gateway that connects many suburban, rural, and industrial properties. The Will County Division of Transportation (WCDOT) is developing a vision to best address transportation related safety issues for this area.

This Study will assess Mills Road from IL Route 53 to Cherry Hill Road and Cherry Hill Road from Mills Road to US Route 30. The limits include portions of unincorporated Will County, the Village of New Lenox, and the City of Joliet. The Study will include preliminary engineering and environmental assessments as the first step in a process to develop improvements to the roadway. This study will help the Project Team understand problems and develop solutions that are the best fit for the community and use this information to develop sustainable solutions.

Study Schedule



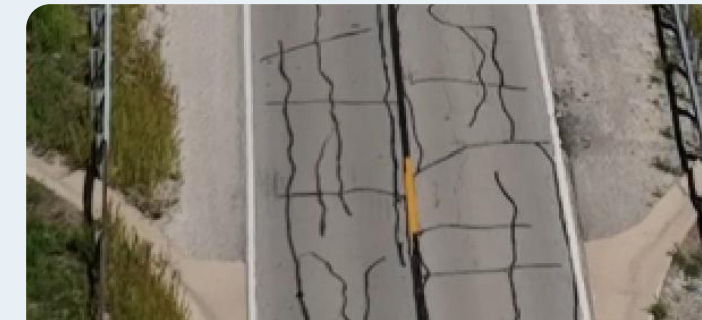
**Pending project readiness and funding availability.*



Pavement Conditions

The Mills Road / Cherry Hill Road pavement is well beyond its expected useful life. The typical life of asphalt pavement with resurfacing is 20 years.

- Mills Road and Cherry Hill Road were originally built nearly 60 years ago.
- Current pavement shows clear signs of distress with Longitudinal Cracking, Block Cracking and Alligator Cracking.



Longitudinal & Block Cracking

Caused by age and weathering.



Alligator Cracking

Caused by pavement failure and drainage issues.

